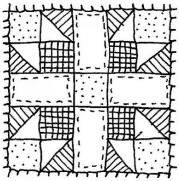


# Announcements for the Week of October 7, 2018

## TODAY IS QUILT SUNDAY

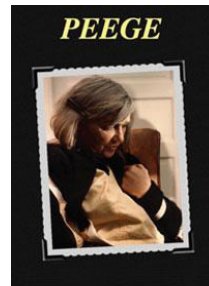


This quilting year, October 2017-September 2018, 126 quilts were made by Marianne (and George) Avery, Elsie Bitterman, Patty Fess, Carol Findling, Ginny Harms, Nancy Hubbard, Muriel Krakar, Betty Polasik, Kathy Rambo, Marilyn Sodergren, Pat Vicha, Nancy Wilen, and Joan Erickson, friend of Carol Findling. To help defray the cost of shipping (\$2.25 per quilt), donations are welcome by the large quilting poster in the back of the sanctuary. Make checks payable to Lutheran World Relief. We thank everyone who has donated and continues to donate material, both large and small pieces, plus new or gently used blankets, which we use for fillers. The quilters, sewers and non-sewers, meet every Tuesday morning, 9:00-11:30 am, in Fellowship Hall. Check us out! *P.S. The "box brigade" was another huge success last Sunday. Many thanks!*

### Adult Forum Today

*Peege* – a short film that invites discussion!

Watch this film and remember it forever! *Peege* is a 1973 American short student film, written and directed by Randal Kleiser, about a family's visit to an elderly relative in a nursing home. No big name stars or special effects, yet this film was named to the National Film Registry by the Librarian of Congress in December 2007. Discussion will follow.



### Faith Circle

Faith Circle is a group of adult women of all ages that meet monthly during the education year (we take summers off). Faith Circle provides monthly fellowship and educational programs for attendees, and service for the community through cards for shut-ins, collected donations, and an annual service project. This year we will be serving at Northern Illinois Food Bank on October 23 from 9-11:30 am. If you are interested in attending, you **MUST** come to our October 9th meeting to sign up and fill out paperwork. On October 9 we will meet for lunch at noon in Fellowship Hall. Please bring your lunch; dessert and beverages will be provided. Our program will be led by Pastor Jared who will discuss our Prison Ministry. Questions? Please contact Jean Siegel.

### PADS

PADS is October 15 and 16. Please look at the sheets in the narthex and see where you can help. We have meatloaf and chicken for main meal. The PADS clients love chicken. We also need bodies for helping make beds, serving food, covering overnight shifts. Thank you for your help with this ministry!

### Midweek Bible Study

Pat Pape's popular Mid-Week Bible Study series kicks into action with this Fall's 6-week study entitled *Reconcilable Differences: Gifts and Challenges of Relationships*. The group meets in the Choir Room on Wednesdays from 10-11:30 am for 6 weeks. Contact Pat at patpape1@sbcglobal.net with questions. No advance registration needed—just show up on Wednesday!

## Prayer Requests

### Prayers of the Congregation are offered for the following members

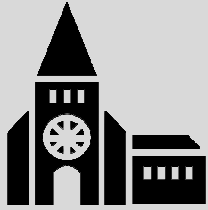
*Paul Brinkman, Dan Driggett,  
Harold Gaede, Elaine Galella,  
Lois Glaybo, Betty Justie,  
Beverly Lamberg, Ron Lundal,  
Bob Marsh, Bryon Noeske,  
Chris Oates, Chris Panttila,  
Sandy Soelter, Janice Stewart,  
Susan Valecka, Pete Vollum*

### and for the following family and friends

*Jennie G., friend of Anna Shindler Olson  
Wyn Mertzlufft,  
sister-in-law of Ron Mertzlufft  
Keith Berland and Christopher Berland,  
uncles of Julie Braun  
Chris Eiser,  
friend of Nancy Carlson  
Florence Olson,  
mother of Laurel Larson  
Mardee Baumgarten Thomas,  
friend of Stacie Pierce & Bruno Tabis  
Jinny Eken,  
sister-in-law of Bob Polzin  
Delores Donahue,  
friend of Ron Mertzlufft  
Kay Brend,  
friend of the Yurkos  
Julaine Roessler,  
sister of Darlene Bohlman*

Please submit your prayer requests by Wednesday at noon.

Urgent requests are always appropriate. Please call the church office at 630-668-5953.



## Worship Each Sunday

8:30 am in Sanctuary

9:45 Education Hour

11:00 am in Sanctuary

Attended Nursery

8:15 am—12:15 pm

Flowers on the altar today are given by **Brian & Debbie Alley** in celebration of their wedding anniversary.

### Pastoral Care is always available.

During office hours, Monday-Thursday 9 am—5 pm, please call the office at 630-668-5953.

In emergencies, contact Pastor Jared Olson at 941-302-5733 (cell)

### The Rev. Jared Olson

Pastor

[pj@stpaulwheaton.org](mailto:pj@stpaulwheaton.org)

### Julie Braun

Parish Administrative Assistant

[julie@stpaulwheaton.org](mailto:julie@stpaulwheaton.org)

### Dana King

Children's Ministry Coordinator

[dana@stpaulwheaton.org](mailto:dana@stpaulwheaton.org)

### Susan Millington

Nursery & Toddler Ministry

### Dr. Tony Payne

Director of Music

### Anniversaries this Week

The following couple celebrates their wedding anniversary this week. Let us join in celebrating their love for each other!

*Stephen & Julie Braun, 15 years*

## Flower Sponsors Needed!

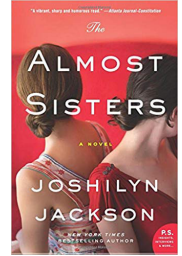


We need folks to sign up for altar flowers!  
The sign-up sheet is available in the Narthex.  
November needs someone every week!



### Book Group

For October, book group will be reading *The Almost Sisters: A Novel* by Joshilyn Jackson. Join us on Sunday, October 21 from 4-6 pm for a lively discussion, snacks, and, of course, wine!



### Work Day Coming Up!

Join us on Saturday, November 3rd from 8 am-12 noon as we spruce up St. Paul indoors and out! Come for an hour or stay all morning -- there will be plenty of projects big and small. Want to know if a project made the list? Contact Dawn Harrington at [dawn.harrington@comcast.net](mailto:dawn.harrington@comcast.net) or ask one of the "Property Brothers" - Ron Lundal, Bob Polzin, or John Whitnell. St. Paul Work Day is sponsored by the Property Committee.

### Greeting Cards

It is getting to be that time of year when you will be receiving cards from different charities. If you don't know what to do with them, there is a basket on bottom shelf near pastors office to recycle cards. Pat Noeske takes them to the Convalescent Center, Veterans' Home, and PRC. These people are always happy to receive them.

### Upcoming Adult Forums

*Next Sunday, October 14*—Are you familiar with hospice care? Maybe not! On October 14, Adult Forum will host Steve Luchtenburg, a representative of Harbor Light Hospice, who will discuss the many types of comfort care available to patients with a life expectancy of less than six months. Harbor Light provides care & comfort to patients, family, and friends during the final stages of a terminal illness.

*Coming Up, October 21&28*—Bible Study with LSTC seminary student, Chelsey Olson Weech, who also happens to be Pastor Jared's daughter!

### October Collection

This month, we are collecting pet food, treats, toys, and cat litter for the DuPage Animal Shelter. There will be a box for donations in the Narthex!

## S.O.S.

### (Save Our Sound!)

One or two people are needed from time to time to help at the sound board during the 11:00 service. For more information, speak with John Campbell, Jeff Huber, Bryon Noeske, or Pastor Jared. It isn't hard!

### This Week at St. Paul

#### Monday, October 8

7:00 pm Spiritual Yoga

#### Tuesday, October 9

9:00 am Labor of Love

9:00 am Men's Bridge

12:00 noon Faith Circle

#### Wednesday, October 10

10:00 am Midweek Bible Study

6:30 pm Handbell Rehearsal

7:15 pm Choir Rehearsal

#### Thursday, October 11

7:00 pm Caring Board Meeting